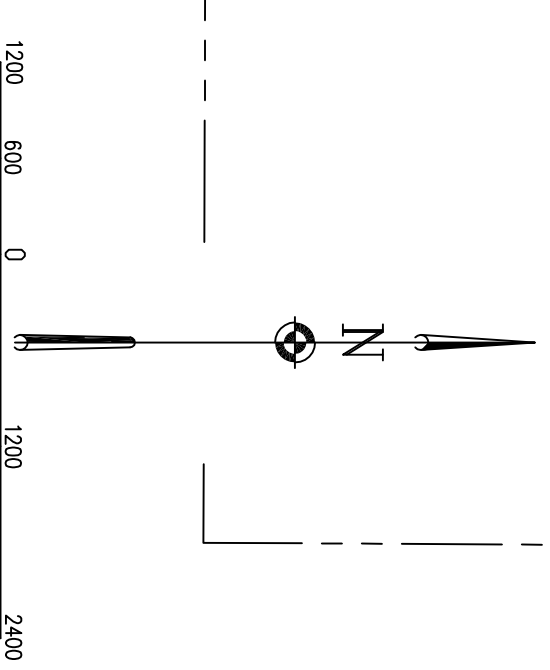
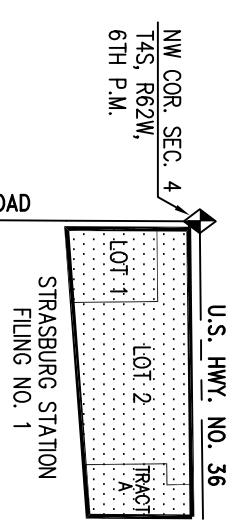
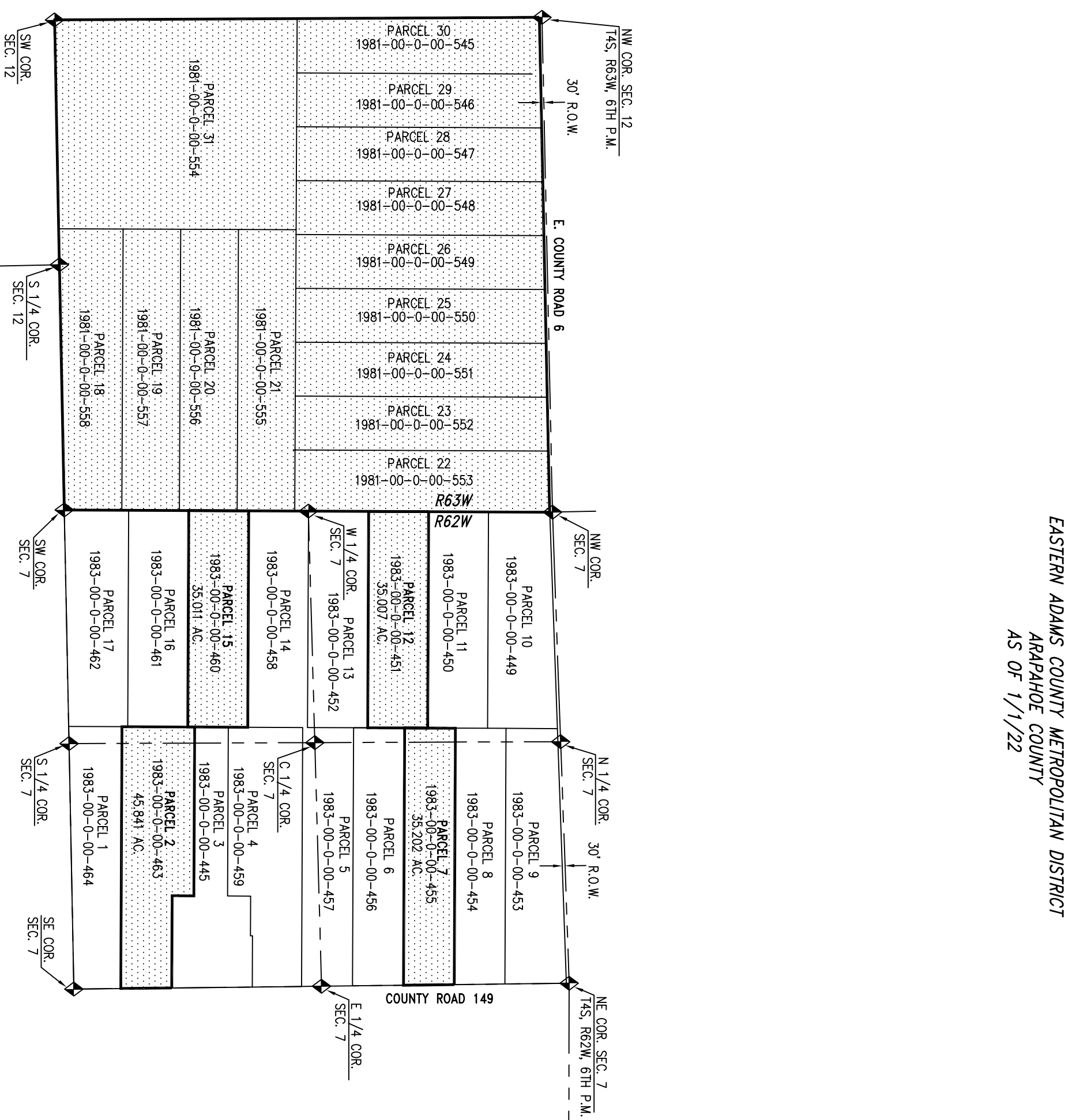


EASTERN ADAMS COUNTY METROPOLITAN DISTRICT
 ARAPAHOE COUNTY
 AS OF 1/1/22



EASTERN ADAMS COUNTY METROPOLITAN DISTRICT
ARAPAHOE COUNTY

ORIGINAL BOUNDARY BY COURT ORDER -4/19/2016

PARCEL 2	45,841 AC.
PARCEL 7	35,202 AC.
PARCEL 12	35,007 AC.
PARCEL 15	35,011 AC.
SECTION 12	643,841 AC.
TOTAL AS OF 1/1/2020	794,902 AC.
COURT ORDER OF 9/8/20	29,137 AC.
INCLUDED STRASBURG STATION FIL. NO. 1	824,039 AC.
TOTAL AS OF 1/1/22	824,039 AC.

NOTE: SECTION 12 INCLUDES PARCELS 18-31

EACMD-ARAPAHOE-2022.DWG
 JANUARY 1, 2022